

# **Elwyn Early Learning Services, Philadelphia A Planning Guide for Parents**

---

**Entering Kindergarten is an exciting time in your child's life and we want to help make the process as smooth as possible.**

# A PLANNING GUIDE FOR PARENTS



## Table of Contents

NOTICE OF REGISTRATION .....	3
WHERE WILL I REGISTER MY CHILD FOR KINDERGARTEN .....	4
TRANSITION GUIDE .....	5
WHAT DO I NEED TO REGISTER .....	6
WHEN AND WHERE TO REGISTER .....	7
IMPORTANT DATES AND WHO TO CONTACT .....	8
TIMELINES AND RESPONSIBILITIES .....	9
SAMPLE "TRANSITION PLAN" .....	10
TRANSITION TO KINDERGARTEN FAIRS .....	11



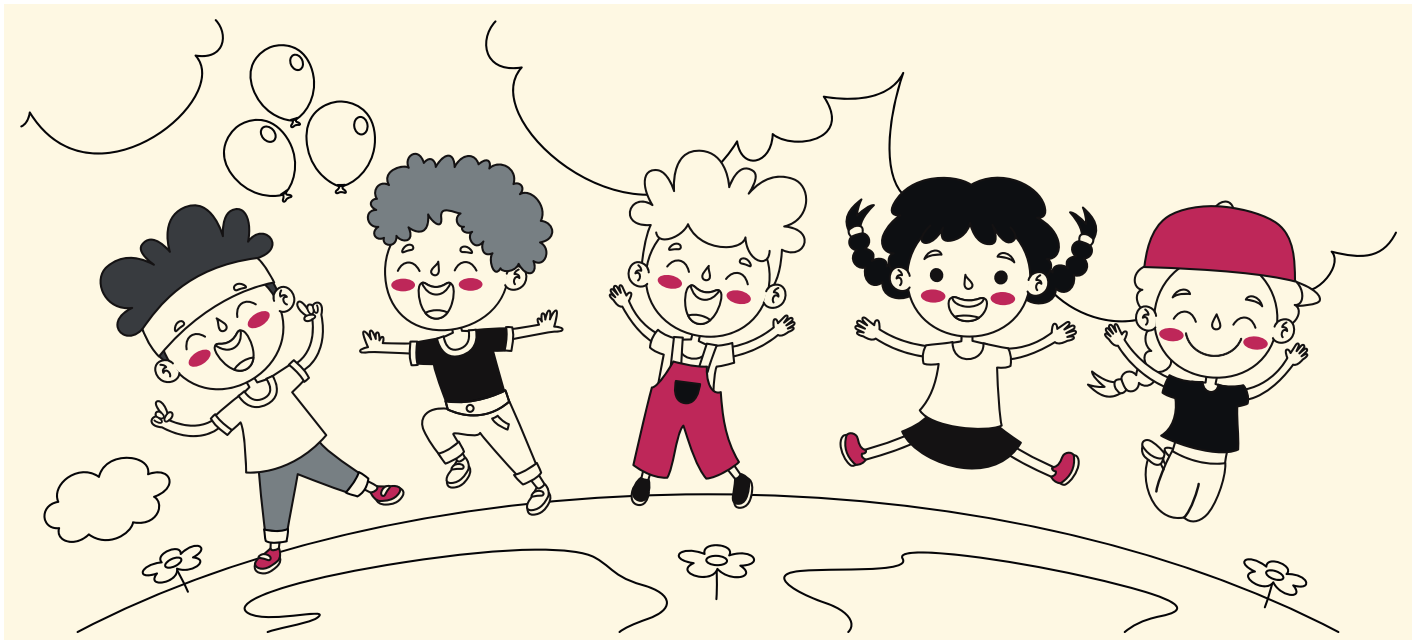
If your child will be 5 years old by  
September 1, 2025

**REGISTER YOUR CHILD FOR**  
**KINDERGARTEN**

# A PLANNING GUIDE FOR PARENTS

## This guide will help you:

1. Understand the steps to transition your child to Kindergarten within the city of Philadelphia
2. Plan for your child's school age program
3. Know the timelines and deadlines for a successful transition
4. Provide information, answer questions, and offer support



### Why do I have to start the Kindergarten process so early?

Your child has an IEP and receives Preschool Early Intervention services. Early registration ensures the school is aware of your child's services which makes for a smooth transition to kindergarten.

Transition to Kindergarten Fairs begin in January and end in February. The transition to kindergarten process gives the school district or charter school time to evaluate, plan, and refer your child to the appropriate classroom environment, with the appropriate services.

Beginning this process so far in advance, ensures that you as the parent/guardian have the time to make an informed decision regarding enrolling in a school aged program or opting for an additional year of Early Intervention.

## Where will I register my child for Kindergarten?

Here are some of the options available in the city of Philadelphia.



# A PLANNING GUIDE FOR PARENTS

## Kindergarten Registration

### What Do I Need to Register My Child for Kindergarten?

The following items following documents REQUIRED for registration:

1. Proof of your student's age: Acceptable documentation includes (the following are examples and not a conclusive list):

- Child's original birth certificate
- Notarized copy of the child's birth certificate
- Child's valid passport
- Original baptismal certificate indicating the child's date of birth
- Copy of the record of baptism – notarized or duly certified and showing the date of birth
- Notarized statement from the parents or another relative indicating the date of birth
- Prior school records indicating the date of birth

2. Two (2) documents showing your address: Examples of this could be:

- A lease, deed or utility bills with your name and the address

3. Immunization records

- Immunization/Shot records are required for registration (Please contact the School District of Philadelphia, or your Charter school of choice to get specific information regarding immunizations, including exemptions if applicable).

All District students regardless of grade can receive immunizations, school and sports physicals at any CityLife Health location by contacting: 1-877-926-9272 or [Locations - CityLife Health](#).

**Parent or Guardian photo identification will also be requested (but is not required for registration): examples of this could be a driver's license, passport, or a state photo identification card.**

## A PLANNING GUIDE FOR PARENTS



**Registration will begin January 21st, 2025**  
**Click here for facts, resources and the**  
**registration link!**

<https://www.philasd.org/studentplacement/kindergarten-registration/>

**You can also register at your neighborhood school!**  
**Click here to find your school:**

[https://webapps1.philasd.org/school\\_finder/](https://webapps1.philasd.org/school_finder/)

**PREPARE TODAY. DON'T DELAY!**

# A PLANNING GUIDE FOR PARENTS

## Countdown to Kindergarten

### November 2024

- Make sure that your child’s preschool teacher and Elwyn Early Learning Services (ELS) LEA Representative have your correct contact information, including phone numbers and mailing address.
- Expect to receive the following documents: Your child’s Intent to Register, Notice of Transition Options and Notice of Your Child’s Transition to School Age Meeting. By completing the Intent to Register, this will serve as notification of your family’s decision to register your child for a school district or charter school for 2025. This then allows Elwyn Early Learning Services (ELS) to share your child’s educational documents with the elected school age program. The educational documents we share will include, but are not limited to, your child’s current Individualized Education Program and most recent Evaluation Report.

### January-February 2025

- Attend at least one (1) of the TRANSITION TO KINDERGARTEN FAIR SESSIONS.
- Representatives from Elwyn ELS and The School District of Philadelphia (SDP) will be available to answer your questions and assist with your transition needs. If you have not done so already, you will be given the opportunity to sign your “INTENT TO REGISTER” so that Elwyn ELS and The School District of Philadelphia will know your intentions for your child for next year.

### January 17 -May 31, 2025

- Register your child for Kindergarten

### Who Can I contact if I have questions or needs?

**The School District of Philadelphia (SDP)**  
[Early Intervention – Specialized Services \(philasd.org\)](https://philasd.org)  
Via Phone: 215-400-4000  
Via Email: [earlyintervention@philasd.org](mailto:earlyintervention@philasd.org)

**Elwyn Early Learning Services (ELS)**  
[Early Learning Services - Family Information - Elwyn](#)  
Via phone: 215-222-8054 (Intake Department)  
Via email: [Samantha.Rosthauser@elwyn.org](mailto:Samantha.Rosthauser@elwyn.org)



# A PLANNING GUIDE FOR PARENTS

## Three Options Unpacked

Month	Early Learning Services (ELS)	School District of Philadelphia (SDP)	Family
<b>September</b>	Joint planning begins with The School District of Philadelphia	Joint planning begins with ELS	Make sure that your child's Elwyn Early Learning Services (ELS) LEA Representative has your correct contact information, including phone numbers and mailing address.  Return the signed Intent to Register to you Elwyn ELS LEA Representative
<b>October</b>	Send all families of children eligible for Kindergarten September 1, 2024, Intent to Register, Notice of Transition Options, and Notice of Transition meeting documents	Meetings monthly to continue collaboration efforts in support of transition Early Intervention families	Make sure that your child's Elwyn Early Learning Services (ELS) LEA Representative has your correct contact information, including phone numbers and mailing address.  Return the signed Intent to Register to you Elwyn ELS LEA Representative
<b>Mid- October</b>	ELS will forward initial demographic and identification information of all children who are eligible for transition to Kindergarten to the SDP.  ELS will forward the current IEP and Evaluations of all children who are eligible for transition to Kindergarten <b><u>and have a signed Intent to Register</u></b> , to the SDP.	SDP will review this preliminary information in preparation for transition planning.	Return the signed Intent to Register to ELS and your LEA Representative
<b>Before December 1st</b>	Send Transition Fair invitation to all families of children eligible for Kindergarten September 1, 2025	N/A	Review transition information provided by ELS. Plan to attend a Transition to Kindergarten Fair in Dec 2024-Feb 2025
<b>Starting in January</b>	Notify families of the SDP and Charter School Kindergarten registration.	Notify families of the SDP and Charter School Kindergarten registration.	<b>REGISTER YOUR CHILD FOR KINDERGARTEN Jan 20th-May 30th (See pages 4-6)</b>
<b>Jan-Feb</b>	Host transition meetings with fairs SDP and Charter Schools	Participate in transition meetings with ELS families.	Participate in at least <b>ONE transition fair</b> with ELS, SDP, and Charter Schools.
<b>By May 30th</b>	N/A	N/A	<b>DEADLINE FOR REGISTERING YOUR CHILD for KINDERGARTEN</b>

# A PLANNING GUIDE FOR PARENTS

## The TRANSITION PLAN will look like this:

### X. Transition Plan

A transition plan should be completed for children as identified in the Special Considerations section of the IEP

<b>1. Transition Outcome/Goal:</b>			
<b>What is happening now?</b>			
<b>What information and child and family considerations should be shared with the team in order to better prepare for transition?</b>			
<b>Activities/Services Designed to Ensure a Smooth Transition from Early Intervention to Kindergarten</b>	<b>Person Responsible</b>	<b>Date To be Completed</b>	<b>Actual Completion Date</b>
<p style="text-align: center;"><b>The plan should include at least the following:</b></p> <ol style="list-style-type: none"> <li>1. Discussions with the parent regarding future support and other matters related to transition</li> <li>2. Steps to prepare the young child for changes based on developmental needs, including activities to help the adjustment to and participation in new settings</li> <li>3. Steps to ensure a smooth transition, including sharing of information, and convening a meeting with the family, community provider, or school district by February 28, of the current program year for preschool EI</li> </ol>			

# A PLANNING GUIDE FOR PARENTS

## TRANSITION TO KINDERGARTEN (FALL 2025) FAIR DATES

Date	Time	Location	Address
December 10, 2024	5PM- 7 PM	Virtual	Virtual Conference <b>Zoom code: EI2025</b>
January 8, 2025	10 AM-12 PM	Education Institute for Early Intervention	4707 Leiper Street (19126)
January 9, 2025	10 AM-12 PM	Overbrook School for the Blind <b>(OSB APS children only)</b>	6333 Malvern Ave (19151)
January 14, 2025	10 AM-12 PM	Easter Seals <b>(APS children only)</b>	3111 W. Allegheny Ave. (19132)
January 15, 2025	10 AM-12 PM	ELS NWC Regional Office, 1st floor	4701 Germantown Ave. (19132)
January 16, 2025	10 AM-12 PM	PA School for the Deaf <b>(APS children only)</b>	100 West School house Lane (19144)
January 17, 2025	11 AM-1 PM	Clarke <b>(APS children only)</b>	Virtual Conference <b>Zoom code: EI2025</b>
January 22, 2025	10 AM-12 PM	ELS SWS Regional Office	5548 Chestnut St. (19139)
January 28, 2025	10 AM-12 PM	Easter Seals	3975 Conshohocken Ave (19131)
February 3, 2025	5PM-7PM	Virtual	Virtual Conference <b>Zoom code: EI2025</b>
February 4, 2025	10 AM-12 PM	SPIN- Orthodox	1616 Orthodox St (19124)
February 10, 2025	5PM-7PM	Virtual	Virtual Conference <b>Zoom code: EI2025</b>
February 11, 2025	10AM-12PM	SPIN- NOR COM	10980 Norcom Rd. (19154)
February 12, 2025	10AM-12PM	Somerset Academy	719 West Girard Ave. (19123 )
February 18, 2025	10AM-12PM	TLC	900 East Howell Street (19149)
February 19, 2025	10AM-12PM	School District of Philadelphia- <b>Auditorium</b>	Dr. Constance E Clayton Education Center 440 North Broad Street (19130)
February 24, 2025	5PM-7PM	Virtual	Virtual Conference <b>Zoom code: EI2025</b>
February 25, 2025	10AM-12PM	ELS NNE Regional Office	2137 East Huntington St. (19125)
February 26, 2025	10AM-12PM	Kencrest- West	5900 Elmwood Ave (19143)